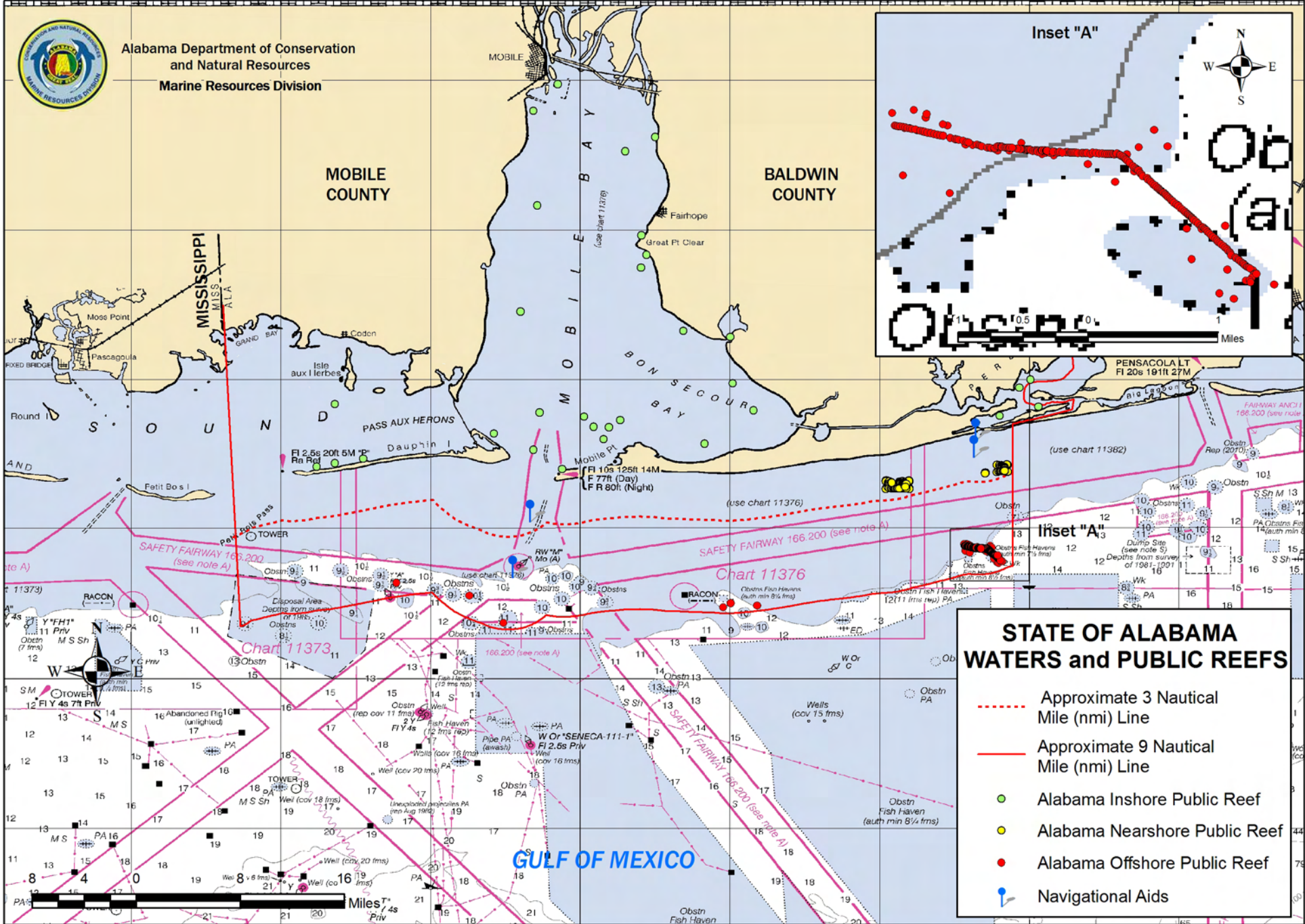
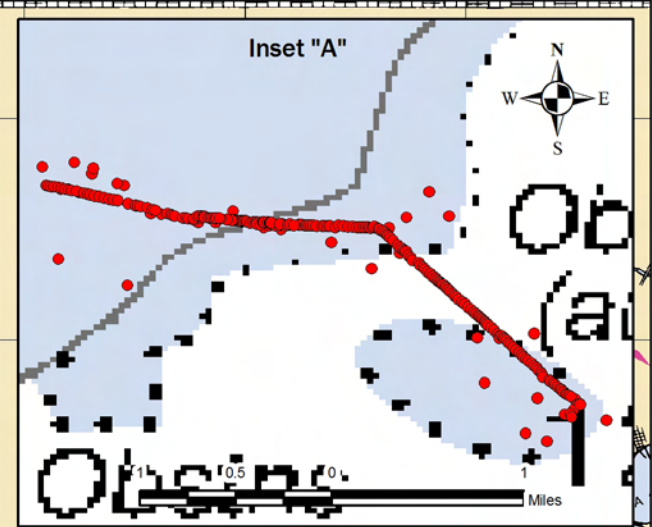




Alabama Department of Conservation and Natural Resources  
Marine Resources Division

MOBILE COUNTY

BALDWIN COUNTY



**STATE OF ALABAMA  
WATERS and PUBLIC REEFS**

- Approximate 3 Nautical Mile (nmi) Line
- Approximate 9 Nautical Mile (nmi) Line
- Alabama Inshore Public Reef
- Alabama Nearshore Public Reef
- Alabama Offshore Public Reef
- Navigational Aids

The 3 nmi boundary for State Waters was scaled from NOAA Nautical Charts. The State of Alabama 9 nmi boundary was generated by shifting the 3 nmi boundary to the beginning point of the Federally recognized State of Florida 9 nmi boundary.

Source: NOAA Medium Resolution Vector Shoreline  
NOAA Nautical Charts 11360 and 11376